

VONDOM

Polyurethane

Polyurethane

Polyurethane foam is a highly elastic material used in the furniture industry. It is characterised by the fact that when the load to which it has been subjected is removed, it instantly recovers its original shape.

The final result is a flexible and durable material.



Manufacturing



After a long time of analysis and research, we have incorporated the cold injection technique using flexible polyurethane with metal structure reinforcement inside.

The result is trendy collections suitable for outdoor and indoor use, with a variety of colours, textures and upholstery to create a more sophisticated and elegant outdoor experience.

Resistance

The combination of components in the manufacture of our polyurethane furniture, it creates an insulating effect that interferes with the growth of fungi and bacteria. We use a water-repellent treatment in order to avoid water filtration and to create pieces that are more resistant to extreme weather conditions.

In addition, the rigid internal metal structure makes the furniture firmer and more rigid.

Tensile strenght	3 y 10 (Kp./cm2)
Compressive strength	1.5 y 9 (Kp./cm2)
Shear strenght	1 y 5 (Kp./cm2)
Modulus of elasticity	40 y 200 (Kp./cm2)



Comfort

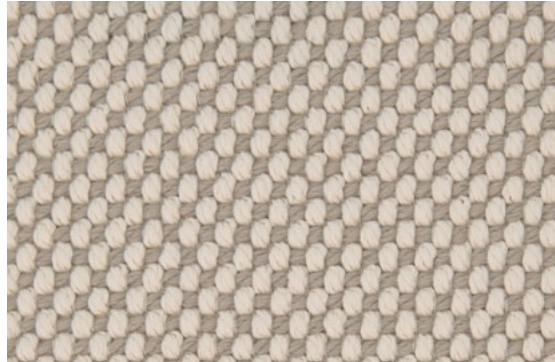


Fusing craftsmanship and advanced technology, attention to detail, industrial production and blurring the boundaries between indoors and outdoors, our polyurethane collections represent a higher level of softness, comfort, quality and durability than those currently available on the market.

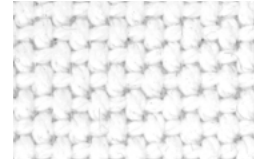
Vondom makes it possible, thanks to the company's values of resistance, adaptability and technique, to place outdoor furniture in the heart of the home, as well as bringing the warmth and comfort of the home outdoors.

Finishes

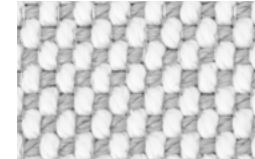
Getaria / Group 2 Glad / 2C



Camel 10033



White 10041



Iceberg 10037



Cream 10047



Tortora 10048



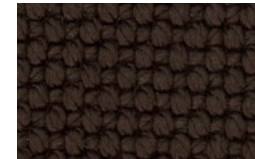
Terra 10039



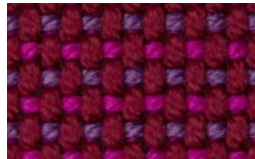
Oasis 10007



Dune 10009



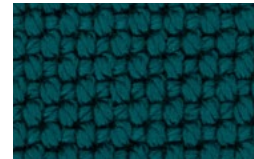
Brown 10050



Aphrodite 10013



Garnet 10046



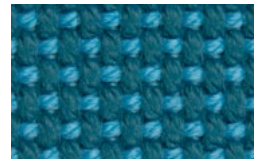
Green 10053



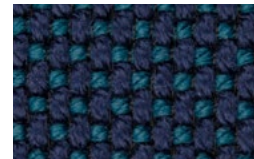
Emerald 10016



Niord 10015



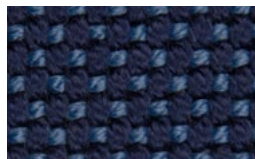
Aquamarine 10003



Oversea 10002



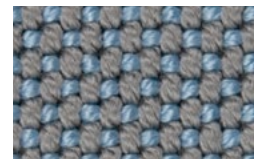
Ocean 10023



Blue 10024



Gallant 10025

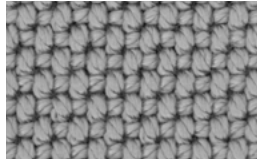


Pearl 10006

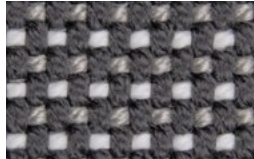


Moon 10040

Finishes



Gray 10042



Granite 10008



Anthracite 10043



Black 10044

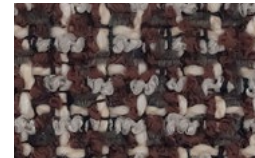
Zumaia / Group 2 Krollet / 2A



Cream 10201



White 10200



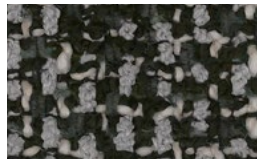
Garnet 10202



Green 10204



Blue 10203



Black 10205

Finishes

Ribadeo / Group 2



Ecrú 10321



White 10320



Tortora 10322



Cream 10323



Camel 10324



Peach 10335



Mustard 10325



Clay 10326



Garnet 10327



Brown 10328



Mint 10337



Olive 10336



Jade 10329



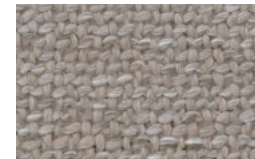
Green 10330



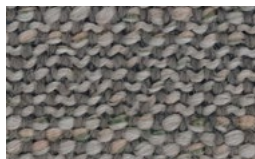
Ocean 10331



Blue 10332



Gray 10333



Anthracite 10334

Finishes

Suances / Group 2



Cream 10303



White 10300



Ecrú 10301



Tortora 10302



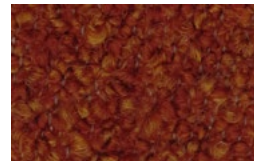
Camel 10304



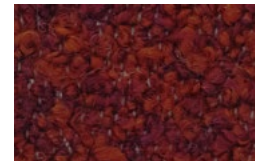
Peach 10316



Mustard 10305



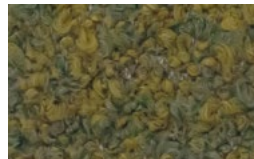
Clay 10306



Garnet 10307



Brown 10308



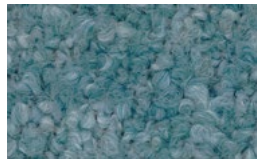
Olive 10317



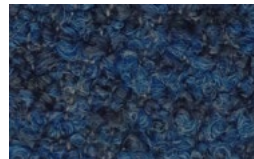
Jade 10309



Green 10310



Ocean 10311



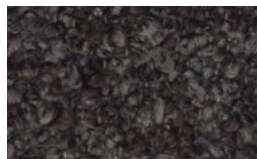
Blue 10312



Gray 10313



Anthracite 10314



Black 10315

Cleaning and care

Our production is governed by the standards of our quality assurance system ISO 9001:2008 and environmental system ISO 14001:2004. And we use only the highest quality materials to guarantee a long product life.

Steps to clean furniture with polyurethane:

1. Soap up the area and the surrounding area with a cloth.
2. Always brush in just one direction.
3. In order to avoid differences between a recently cleaned areas and the rest of the product we recommend to wash the whole product.

For a better preservation of the furniture, it is advisable to cover each of the items.

VONDOM

info@vondom.com

+34 962 39 84 86

vondom.com

