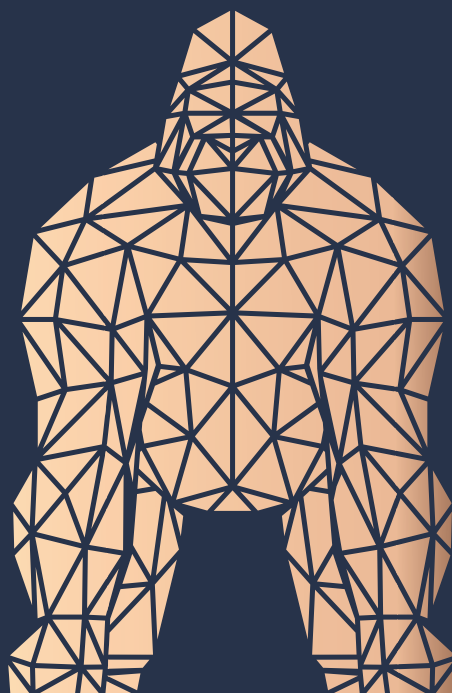


2025

Designers



VONDOM

VONDOM

Designers

A-Cero	138 / 234
Agatha Ruiz de la Prada	251
Archirivolto Design	154 / 168 / 198 / 206
Buratti	232
Eero Aarnio	238
Estudi{H}ac	208
Eugeni Quitllet	40 / 142 / 162 / 174 / 204 / 222
Fabio Novembre	188
Harry Paul	250
Javier Mariscal	240
Jean-Marie Massaud	22
Jorge Pensi	190
Karim Rashid	104 / 200 / 230
Marcel Wanders	34
Ora-ïto	228
R & L Palomba	237
Ramón Esteve	46 / 112 / 116 / 202 / 218
Ross Lovegrove	226
Stefano Giovannoni	156 / 192
Studio Vondom	252
Teresa Sapey	114 / 216 / 220

Sections

Collections	20	<u>Product</u>	<u>Finishes</u>	<u>Technical</u>
Designers	282	<u>Dimensions</u>		<u>Info</u>

Collections

A	Adan	114	L	Lava	200		Surf	201
	Africa	146		Love	174	T	Tablet	74
	Agatha	251		Love Mini	178		The Factory	62
	Alma	236		Luna	46		The 2nd Light	262
	And	188	M	Madison	142		Tulum	40
B	Biophilia	226		Mari-Sol	182	U	UFO	229
	Blanca	249		Marquis	212		Ulm	130
	Bloom	224		Milos	28	V	Vases	208
	Blow	194		Mora	248		Vela	116
	Bones	237		Manta	204		Venus	38
	Brooklyn	180	N	Noma	240		Vertex	104
	Bubbles	263	O	Organic	265		Vineyard	66
	Bum-Bum	222		Origami	252		Voxel	106
	Bye-Bye	250	P	Pal	230	W	Wall Street	184
C	Chrismy	220		Pasadena	22		Wing	234
D	Delta	190		Peacock	238			
F	Faz	88		Pezzettina	154			
	Faz Wood	98		Pillow	196			
	Fiesta	198		Pixel	82			
	Forest	218		Posidonia	52			
	Frame	126	Q	Quartz	202			
G	Gatsby	76	R	Rest	138			
H	Hamptons	56		Rosinante	238			
	Hidra	186		Roulette	239			
I	Ibiza	162	S	Sabinas	244			
	Iglú	102		Skull	216			
	Incasso	206		Solid	192			
J	Jut	256		Spritz	168			
	Jut Chill	260		Stone	156			
K	Kes	232		Studio Planters	264			
	Kimono	112		Suave	34			

VOYDOM

Chairs / Sillas



Africa
Eugeni Quitllet
147



Agatha
Agatha Ruiz
de la Prada
251



Biophilia
Ross Lovegrove
227



Brooklyn
Eugeni Quitllet
181



Delta
Jorge Pensi
191



Faz
Ramón Esteve
95



Faz Wood
Ramón Esteve
99



Frame
Ramón Esteve
128



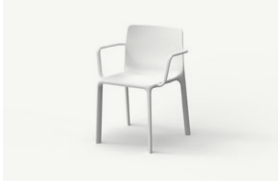
Hamptons
Ramón Esteve
60



Hidra
Eugeni Quitllet
187



Ibiza
Eugeni Quitllet
163



Incasso
Archirivolto Design
207

Kes
Gabrielle &
Oscar Buratti
233



Kimono
Ramón Esteve
113

Love
Eugeni Quitllet
175

Madison
Eugeni Quitllet
143

Manta
Eugeni Quitllet
205



Pal
Karim Rashid
231

Pezzettina
Archirivolto Design
155

Posidonia
Ramón Esteve
53

Quartz
Ramón Esteve
203



The
Factory
Ramón Esteve
63

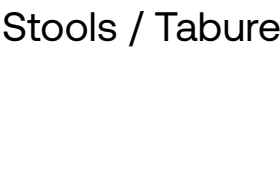
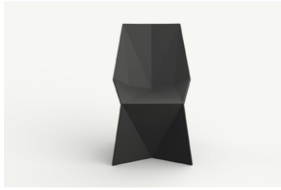
Tulum
Eugeni Quitllet
41

Rest
A-Cero
140

Sabinas
Javier
Mariscal
246

Solid
Stefano Giovanonni
193

Spritz
Archirivolto Design
169



Wall-Street
Eugeni Quitllet
185

Wing
A-Cero
235

Africa
Eugeni Quitllet
150

Brooklyn
Eugeni Quitllet
181

Faz
Ramón Esteve
96

Faz Wood
Ramón Esteve
99

Frame
Ramón Esteve
127

Ibiza
Eugeni Quitllet
164



Jut
Studio Vondom
258

Noma
Javier
Mariscal
241

Spritz
Archirivolto Design
169

UFO
Ora-Itó
229

Vases
Estudi{H}ac
209

Vertex
Karim
Rashid
105

Voxel
Karim
Rashid
109

Wall-Street
Eugeni Quitllet
185

Wing
A-Cero
235

Low Stools & Ottomans / Puffs



Adan
Teresa Sapey
115

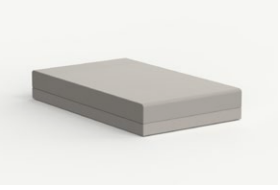
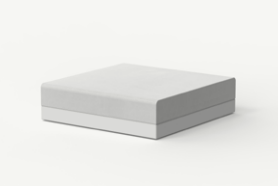
Frame
Ramón Esteve
127

Gatsby
Ramón Esteve
77

Hamptons
Ramón Esteve
57

Jut Chill
Studio Vondom
261

Milos
Jean-Marie
Massaud
29



Noma
Javier
Mariscal
241

Pal
Karim Rashid
231

Pillow
Stefano Giovanonni
197

Pasadena
Jean-Marie
Massaud
23

Pixel
Ramón Esteve
83

Vela
Ramón Esteve
117



Posidonia
Ramón Esteve
53

Skull
Teresa Sapey
217

Stone
Stefano Giovanonni
157

Suave
Marcel Wanders
35

Tablet
Ramón Esteve
75

The
Factory
Ramón Esteve
5

Ulm
Ramón Esteve
131

Vela
Ramón Esteve
117

Stools / Taburetes



Lounge Chairs /
Butacas



Gatsby
Ramón Esteve
77

Hamptons
Ramón Esteve
57

Ibiza
Eugeni Quitllet
163

Jut
Studio Vandom
258

Luna
Ramón Esteve
47

Milos
Jean-Marie
Massaud
29

Pal
Karim
Rashid
231

Pal
Karim
Rashid
231

Pasadena
Jean-Marie
Massaud
23



Pezzettina
Archirivolto Design
155

Pillow
Stefano Giovanonni
197

Pixel
Ramón Esteve
84

Posidonia
Ramón Esteve
53

Rest
A-Cero
139

Roulette
Eero Aarnio
239

Sabinas
Javier
Mariscal
245

Solid
Stefano Giovanonni
193

Spritz
Archirivolto Design
171



Stone
Stefano Giovanonni
160

Suave
Marcel Wanders
35

Tablet
Ramón Esteve
75

The Factory
Ramón Esteve
64

Tulum
Eugeni Quitllet
42

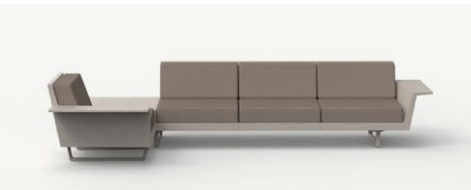
UFO
Ora-Itto
229

Ulm
Ramón Esteve
132

Vela
Ramón Esteve
117

Vineyard
Ramón Esteve
67

Sofas / Sofás



Delta
Jorge Pensi
191

Faz
Ramón Esteve
93

Frame
Ramón Esteve
129

Gatsby
Ramón Esteve
77

Hamptons
Ramón Esteve
57

Milos
Jean-Marie
Massaud
29

Pasadena
Jean-Marie
Massaud
23

Pixel
Ramón Esteve
83



Posidonia
Ramón Esteve
53



Rest
A-Cero
139



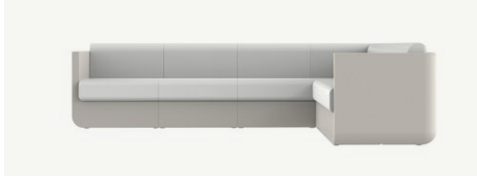
Suave
Marcel Wanders
35



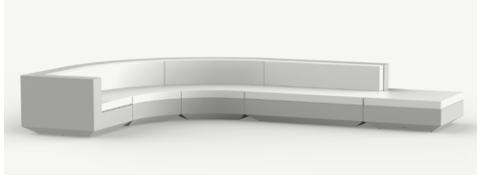
Tablet
Ramón Esteve
75



The Factory
Ramón Esteve
63



Ulm
Ramón Esteve
133



Vela
Ramón Esteve
117



Africa
Eugeni Quitllet
147



Africa
Eugeni Quitllet
147



Biophilia
Ross Lovegrove
227



Blow
Stefano Giovannoni
8



Bum-Bum
Eugeni Quitllet
223



Frame
Ramón Esteve
127



Hamptons
Ramón Esteve
57



Jut
Studio Vondom
258



Luna
Ramón Esteve
47



Pezzettina
Archirivolto Design
155



Posidonia
Ramón Esteve
54



Sabinas
Javier Mariscal
245



Solid
Stefano Giovannoni
193



Spritz
Archirivolto Design
171



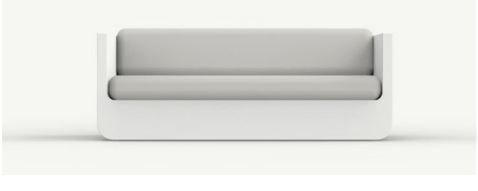
Stone
Stefano Giovannoni
160



Tulum
Eugeni Quitllet
41



UFO
Ora-ïto
229



Ulm
Ramón Esteve
132



Vela
Ramón Esteve
120



Vineyard
Ramón Esteve
67

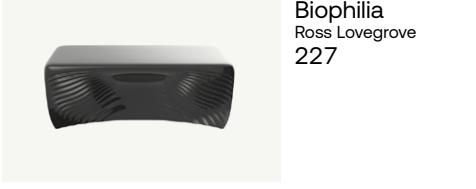
Coffee & Low Tables / Mesas Bajas



Adan
Teresa Sapey
114



Agatha
Agatha Ruiz
de la Prada
251



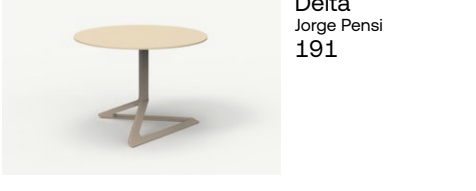
Biophilia
Ross Lovegrove
227



Blow
Stefano Giovannoni
195



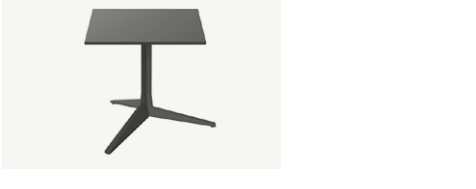
Bum-Bum
Eugeni Quitllet
223



Delta
Jorge Pensi
191



Faz
Ramón Esteve
93



Faz
Ramón Esteve
93



Frame
Ramón Esteve
127



Milos
Jean-Marie
Massaud
29



Tablet
Ramón Esteve
75



Vineyard
Ramón Esteve
67



Faz Wood
Ramón Esteve
100



Gatsby
Ramón Esteve
77



Sabinas
Javier Mariscal
245



Wing
A-Cero
235



Frame
Ramón Esteve
128



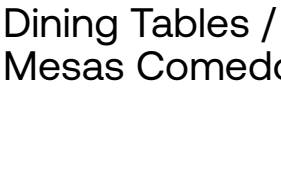
Noma
Javier Mariscal
242



Skull
Teresa Sapey
217



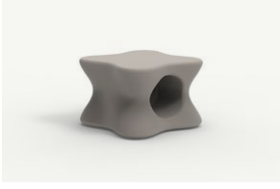
The Factory
Ramón Esteve
63



**Dining Tables /
Mesas Comedor**



Hamptons
Ramón Esteve
57



Pal
Karim Rashid
231



Solid
Stefano Giovanonni
193



Tulum
Eugeni Quitllet
41



Biophilia
Ross Lovegrove
227



Gatsby
Ramón Esteve
78



Ibiza
Eugeni Quitllet
163



Pasadena
Jean-Marie
Massaud
23



Spritz
Archirivolto Design
171



UFO
Ora-Ïto
229



Delta
Jorge Pensi
191



Jut
Studio Vondom
258



Pillow
Stefano Giovanonni
197



Stone
Stefano Giovanonni
157



Ulm
Ramón Esteve
132



Faz
Ramón Esteve
96



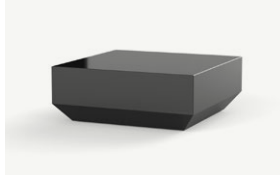
Hamptons
Ramón Esteve
60



Posidonia
Ramón Esteve
53



Suave & Pixel
Studio Vondom
84



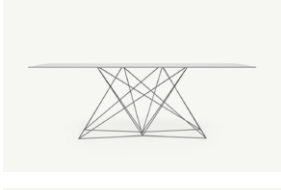
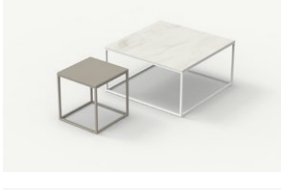
Vela
Ramón Esteve
117



Jut
Studio Vondom
257



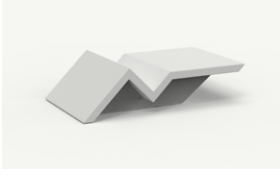
Luna
Ramón Esteve
47



Mari-Sol
Eugeni Quitllet
183



Mari-Sol
Eugeni Quitllet
183



Rest
A-Cero
139



Voxel
Karim Rashid
109



Noma
Javier Mariscal
241



Pezzettina
Archirivolto
155



Posidonia
Ramón Esteve
53



Quartz
Ramón Esteve
203



Rest
A-Cero
140



Solid
Stefano Giovanonni
192



The Factory
Ramón Esteve
63



Tulum
Eugeni Quitllet
41



UFO
Ora-Itto
229



Vases
JM Ferrero
209



Vela
Ramón Esteve
118



Vertex
Karim Rashid
105



Vineyard
Ramón Esteve
68



Delta
Jorge Pensi
191



Faz
Ramón Esteve
96



Frame
Ramón Esteve
127



Love
Eugeni Quitllet
176



Milos
Jean-Marie
Massaud
32



Africa
Eugeni Quitllet
153



Gatsby
Ramón Esteve
78



Jut
Studio Vondom
258



Mari-Sol
Eugeni Quitllet
183



Noma
Javier Mariscal
241



Spritz
Archirivolto
170



Wing
A-Cero
235



Africa
Eugeni Quitllet
153



Africa
Eugeni Quitllet
153



Africa
Eugeni Quitllet
153



Faz
Ramón Esteve
90



Frame
Ramón Esteve
127



Gatsby
Ramón Esteve
81



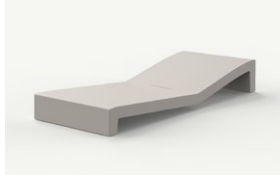
Hamptons
Ramón Esteve
58



Ibiza
Eugeni Quitllet
164



Jut
Studio Vondom
257



Love
Eugeni Quitllet
176



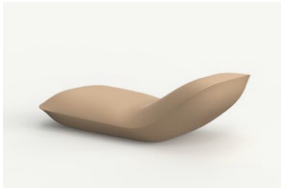
Milos
Jean-Marie
Massaud
32



Milos
Jean-Marie
Massaud
32



Pasadena
Jean-Marie
Massaud
26



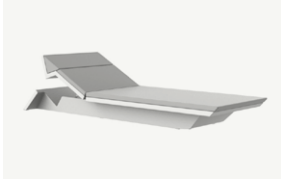
Pillow
Archirivolto
197



Pixel
Ramón Esteve
84



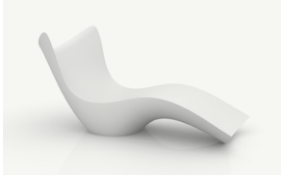
Posidonia
Ramón Esteve
54



Rest
A-Cero
140



Spritz
Archirivolto
173



Surf
Karim Rashid
201



The Factory
Ramón Esteve
63



Vela
Ramón Esteve
121



Vineyard
Ramón Esteve
69



Voxel
Karim Rashid
109



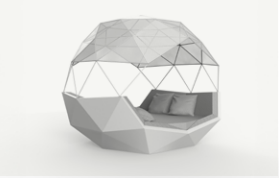
Faz
Ramón Esteve
89



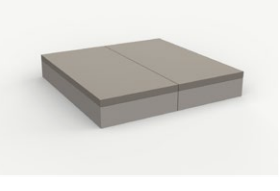
Hamptons
Ramón Esteve
61



Iglú
Ramón Esteve
103



Jut Chill
Studio Vondom
261



Luna
Jean-Marie
Massaud
50



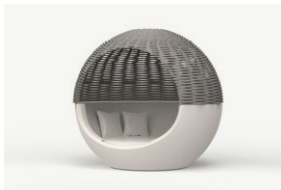
Milos
Jean-Marie
Massaud
32



Milos
Jean-Marie
Massaud
32

**Bar Tables /
Mesas Altas**

**Sun Loungers &
Daybeds / Tumbonas
y Daybeds**



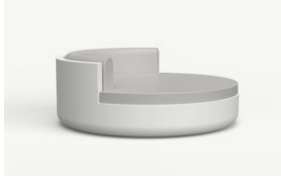
Moon Ulm
Ramón Esteve
135



Pixel
Ramón Esteve
84



The Factory
Ramón Esteve
65



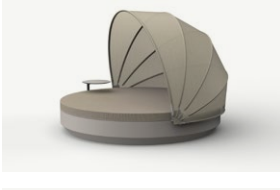
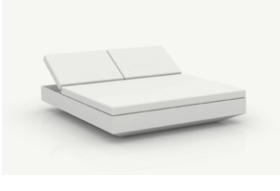
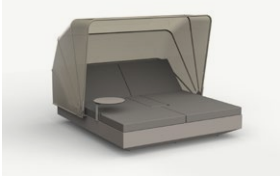
Ulm
Ramón Esteve
131



Vineyard
Ramón Esteve
72



Vela
Ramón Esteve
122



Planters / Maceteros



Adan
Teresa Sapey
115



Agatha
Agatha Ruiz
de la Prada
251



Alma
A-Cero
236



**Angular &
1/2 Cilindro**
Studio Vondom
268



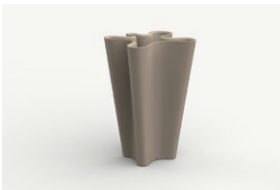
Bloom
Eugeni Quitllet
225



Blow
Stefano Giovannoni
195



Bones
Roberto & Ludovica
Palomba
237



Bye-bye
Harry-Paul
250



Centro
Studio Vondom
273



Centro Alto
Studio Vondom
265



Cilindro
Studio Vondom
266



Cono
Studio Vondom
270



**Cono
Cuadrado**
Studio Vondom
270



Cubo & Torre
Studio Vondom
270 & 268



Cuenco
Studio Vondom
275



Curvada
Studio Vondom
265



Faz
Ramón Esteve
95



Faz
Ramón Esteve
93



Faz Jarrón
Ramón Esteve
89



Gatsby
Ramón Esteve
77



Jardinera
Studio Vondom
268



Land
Studio Vondom
272



Maceta
Studio Vondom
279



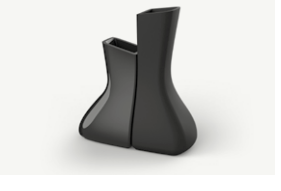
Marquis
Estudi(H)ac
213



Milos
Jean-Marie
Massaud
31



Muro
Studio Vondom
276



Noma
Javier Mariscal
242



Organic
Studio Vondom
265



Origami
Studio Vondom
254

Pal
Karim Rashid
231



Peacock
Eero Aarnio
238

Pezzettina
Archirivolto Design
155

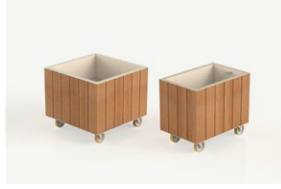
Pillow
Stefano Giovannoni
197

Sfera
Studio Vondom
275

Skull
Teresa Sapey
217

Stone
Stefano Giovannoni
158

Suave
Marcel Wanders
37



Ulm
Ramón Esteve
136

Uve
Studio Vondom
276

Vases
Estudi{H}ac
209

Vaso
Studio Vondom
280

Vela
Ramón Esteve
120

Venus
Marcel Wanders
38

Vineyard
Ramón Esteve
69

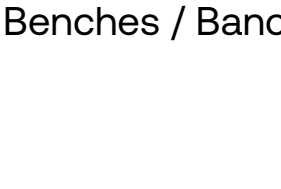
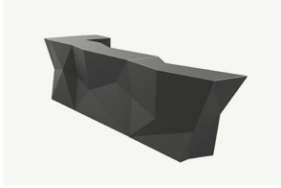
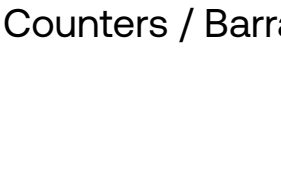
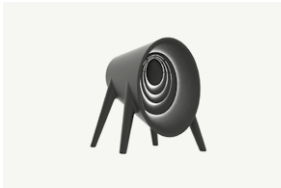
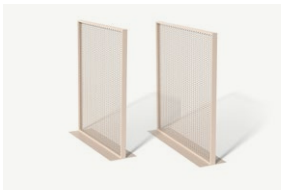
Wall
Studio Vondom
272

Objects / Objetos



Origami
Studio Vondom
253

Rosinante
Eero Aarnio
238



The Factory
Ramón Esteve
64

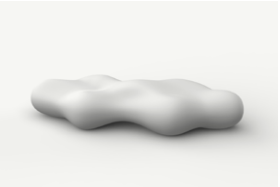
Toro
Bum-Bum
Eugeni Quitllet
223

Faz
Ramón Esteve
96

Fiesta
Archirivolto Design
199

Vela
Ramón Esteve
125

And
Fabio Novembre
189



Faz
Ramón Esteve
96

Frame
Ramón Esteve
127

Lava
Karim Rashid
200

Vases Island
Estudi{H}ac
210

Counters / Barras

Benches / Bancos



Blanca
Javier Mariscal
249



Bloom
Eugeni Quitllet
225



Bubbles
Studio Vondom
263



Chrismy
Teresa Sapey
221



Faz
Ramón Esteve
95



Forest
Ramón Esteve
219



Gatsby
Ramón Esteve
78



Jut Chill
Studio Vondom
261



Marquis
Estudi{H}ac
213



Marquis
Estudi{H}ac
214



Mora
Javier Mariscal
248



Sabinas
Javier Mariscal
245



The Factory
Ramón Esteve
64



The Second
Light
Studio Vondom
262



Ulm
Ramón Esteve
131



Vases
Estudi{H}ac
210



Vases
Estudi{H}ac
210



Vela
Ramón Esteve
124



Wing
A-Cero
235



Wing
A-Cero
235



Collections

At Vondom we have always been known for offering outdoor furniture with an innovative and unique design. Since we began our trajectory in 2008 manufacturing planters and designer furniture with simple lines, our hallmark has been innovation. Our outdoor furniture collections are the result of an evolution marked by the search for offering greater comfort and thrusting sustainability, incorporating natural and 100% recyclable materials.

Pasadena

P. 22 — 23

Pasadena sectional sofa and lounge chair.
Tortora and fisterra olive

Studio cushions.
Fisterra olive and ribadeo olive

Tables. Tortora and concrete tortora

Collection
dimensions



P. 24 — 25

Pasadena sectional sofa. Tortora and baiona green

Tables. Tortora, ecru, concrete tortora and cream tortora

Lounge chair. Ecrú and calella jade

Studio cushions. Baiona green and calella jade



P. 26 — 27
Pasadena sun
lounger. Tortora and
fisterra olive



Milos



reddot winner 2024

P. 28 — 29

Milos sectional sofa
and lounge chair.
Natural teak and
ribadeo cream

Low tables. Natural
teak and concrete
cream

Planters and nano
planters. Cream

Suave cushions.
Ribadeo clay and
moraira clay



28

by Jean-Marie Massaud

Collection
dimensions



P. 30

Milos puff XL with back cushion and puff M. Natural taek and ribadeo cream

Coffee tables. Natural teak and concrete cream

Nano planters and planter. Cream

Suave cushion. Ribadeo clay

Milos lounge chair. Natural teak and ribadeo cream

Coffee table. Natural teak and concrete cream

Planter and nano planters. Cream



P. 31

Milos corner section 60°. Natural taek and ribadeo cream

Coffee tables. Natural teak and concrete cream

Nano planters. Cream

Suave cushions. Ribadeo clay and moraira clay





P. 32 — 33

Milos daybed with sun roof. Wood 2, cream, louro cream and roof fabric cream

Suave cushions. Louro cream

Milos sun lounger. Wood 2, cream and louro cream

Coffee table. Natural teak and concrete cream

Planters and nano planters. Cream

Suave cushions. Louro cream



Suave



P. 34

Suave sectional sofa
and lounge chair.
Getaria oversea

Puffs. Getaria oversea,
getaria aquamarine
and getaria green

Cushions. Getaria
oversea and getaria
aquamarine

P. 35

Suave lounge chair
and sectional sofa.
Getaria oversea and
getaria aquamarine

Cushions. Getaria
oversea and getaria
aquamarine



34

by Marcel Wanders



Collection
dimensions



P. 36 — 37

Suave sectional sofa,
loung chair. Getaria
garnet

Puffs and cushions.
Getaria garnet and
getaria cream

Planters. Cream



P. 38

Suave planters. Ecrú, lacquered black and white

Venus planters. Black and lacquered black

P. 39

Suave sectional sofa and lounge chair. Getaria iceberg, and getaria gray

Puffs. Getaria iceberg, getaria anthracite and getaria white

Cushions. Getaria anthracite



Tulum

40

by Eugeni Quitllet

P. 40 — 41

Tulum chair. Brown,
natural teak and
zumaia white

Table. Brown and
natural teak

Tulum Sofa XL. Brown,
natural teak and
zumaia white

Coffee table. Brown
and natural teak

Suave cushions.
Zumaia white and
zumaia black



Collection
dimensions



P. 42 — 43

Tulum lounge chair.
Brown, natural teak
and zumaia white

Suave cushions.
Zumaia white and
zumaia black

Tulum chair. Brown,
natural teak and
zumaia white

Table. Brown and
natural teak

Tulum sofa XL. Brown,
natural teak and
zumaia white

Coffee table. Brown
and natural teak





P. 44 — 45

Tulum lounge chair.
Brown, natural teak
and louro cream

Sofa. Brown, natural
teak and louro
cream

Coffee table. Brown
and natural teak



Luna

P. 46 — 49

Luna sofa and lounge chair. Brown and suances camel

Coffee table. Brown and solid core brown

Studio cushions. Ribadeo brown



46

by Ramón Esteve

Collection
dimensions







P. 50—51
Luna daybed. Brown
and suances camel
Studio cushions.
Ribadeo brown



Posidonia

52

by Ramón Esteve

P. 52

Posidonia sectional sofa, lounge chair and puff. Camel and portonovo camel

Low table. Camel and solid core camel

Vela planter. Camel and camel

Tablet cushions. Fistera camel and roses tortora

P. 53

Posidonia chair. Camel and portonovo camel

Table. Camel and solid core camel

Vela planter. Camel and camel



Collection
dimensions



P. 54 — 55

Posidonia lounge chair and sofa. Camel and portonovo camel

Coffee table. Camel and solid core camel

Posidonia sun lounger. Camel and portonovo camel

C table. Camel and solid core camel

Cushions. Fistera camel and roses tortora



Hamptons

Collection
dimensions



P. 56 — 57

Hamptons lounge chair and sectional sofa. Cream, portonovo cream and llanes cream

Cushions. Portonovo cream and portonovo camel

Puff. Cream and portonovo cream

Coffee table. Cream and solid core cream



56

by Ramón Esteve

Hamptons sun lounger.
Cream, natural teak,
portonovo cream and
lanes cream

Lounger table. Cream
and solid core cream





Hamptons chair.
Anthracite, natural
teak, portonovo
anthracite + portonovo
gray bourdon and
llanes anthracite

Dining table. Black and
solid core black

Hamptons deck chair.
Anthracite and llanes
anthracite

Cushions. Portonovo
anthracite + portonovo
gray bourdon and
portonovo gray +
portonovo anthracite
bourdon

Coffee table.
Anthracite and solid
core anthracite



The Factory



62

by Ramón Esteve

P. 62

The Factory sectional sofa and puff. Brown and getaria cream

Coffee table. Brown and solid core brown

Lamp S and area divider. Brown

P. 63

The Factory chair. Brown and getaria cream

Table. Brown and solid core brown

The Factory sun lounger. Brown and getaria cream

Lounger table. Brown and solid core brown



Collection
dimensions



The Factory daybed.
Brown, getaria cream,
curtain fabric cream
and roof fabric cream

Tablet cushions.
Portonovo ecru



The Factory sectional
sofa, lounge chair and
puff. Brown and getaria
cream

Coffee table. Brown
and solid core brown

Area divider and
Lamp S. Brown

The Factory area
divider and planter.
Brown

The Factory lamp S, M
and L. Brown



Vineyard

Collection
dimensions



P. 66 — 67
Vineyard sofa L and
lounge chair. Cream,
natural teak and
getaria cream
Cushions. Getaria
cream
Coffee table L and
planter L. Cream and
natural teak



66

by Ramón Esteve



Vineyard table and chair. Cream and natural teak

Vineyard planter L.
Cream and natural teak

Sun lounge. Cream, natural teak and getaria cream



Vineyard extra-large
sofa and lounge
chair. Brown,
weathered teak and
getaria brown

Extra-large coffee
table. Brown and
weathered teak



Vineyard daybed.
Cream, roof fabric
cream and getaria
cream



Vineyard daybed.
White, roof fabric white
and baiona ocean.
Daybed. White, white
rope and baiona ocean



Tablet



Good
Design
Winner

74

by Ramón Esteve

Collection
dimensions

P. 74 — 75

Tablet sectional sofa.
Getaria terra and
getaria ecru

Cushions. Getaria terra
and getaria white

Tables. Ecrú and stone
finish white

Lamp. Ecrú and ice



Gatsby

76

by Ramón Esteve

P. 76 — 77

Gatsby sectional sofa,
puff and lounge chair.
Tortora and baiona
cream

Low tables. Tortora
and solid core tottora

Planters. Tortora

Cylinder table lamp.
Fumé

Tablet cushions.
Baiona cream



Wallpaper*
DESIGN
AWARDS
2023
WINNER

Collection
dimensions



reddot winner 2020

Gatsby cylinder table lamp. Fumé

Gatsby tables. Tortora and solid core tortora

Planters. Tortora
Prisma table lamp. Clear

Africa chair and stool. Ecru



Gatsby sun lounger. Ecru and ecru





Gatsby sun lounger.
Ecru and ecru
Sectional sofa. Cream
and louro cream
Tables. Cream and
solid core cream
Studio cushions. Louro
olive and moraira
green

Pixel

82

by Ramón Esteve

Collection
dimensions

P. 82

Pixel sectional sofa
and puff. Ecrú, getaria
brown, getaria cream,
and getaria tortora

P. 83

Pixel puff, circular puff,
pentagonal puff and
back cushion. Tortora,
cream, fisterra cream
and fisterra tortora

Table. Cream and solid
core cream



P. 84
Pixel sectional sofa
and lounge chair.
Cream and fisterra
cream
Table. Cream and solid
core cream

P. 85
Pixel sun lounger
single and double.
Tortora and altea white



Faz

88

by Ramón Esteve

P. 86 — 89

Faz daybed. Cream and ribadeo cream

Daybed with hinged canopy. Cream, ecru and ribadeo cream

Pots. Cream

Tablet cushions. Ribadeo mint and teguise green



Collection
dimensions





P. 90 — 89
 Faz sunbed and sun
 lounge table. Cream
 Sun lounge. Cream
 and ribadeo cream





Faz sectional sofa,
lounge chair and puff.
Cream and ribadeo
cream

Coffee table. Cream

Cube, wall and
jardiniere. Cream

Armchair. Cream and
ribadeo cream

Dining table. Cream
and solid core cream

Tablet cushions.
Teguise green and
ribadeo mint



P. 92 — 95

Faz inox. steel wire
table. White and solid
core white

Steel legs chair
and steel legs chair
armrest. White and
white

Lamp. White and ice +
RGBW

Faz armchair. Cream
and ribadeo cream

Dining table. Cream
and solid core cream

Planter set. Cream



P. 96 — 95
 Faz bench. Cream and
 ribadeo cream
 Counter. Tortora
 Bar stool. Ecrú and
 ecru
 Clear legs armchair.
 Ecrú
 Table. Ecrú and ecru



Faz Wood

98

by Ramón Esteve

P. 96

Faz Wood stool.
Wood 2 and black

High table. Wood 2
and stone finish black

P. 99

Faz Wood armchair.
Wood 2 and black

Lounge table. Wood 2
and stone finish black



Collection
dimensions

P. 100 — 99
Faz Wood chair and
armchair. Wood 2 and
white
Lounge table. Wood 2
and solid core table



Iglú



102

by Ramón Esteve

P. 100 — 103

Iglú daybed. White,
roof fabric white and
portonovo cream

Studio cushions.
Getaria gray and
getaria black



Collection
dimensions



Vertex



104

by Karim Rashid

P. 102 — 105

Vertex chair. White

Dining table. White and
stone finish white

Vertex stool and Faz
counter. White



Collection
dimensions

Voxel



106

by Karim Rashid



Collection
dimensions

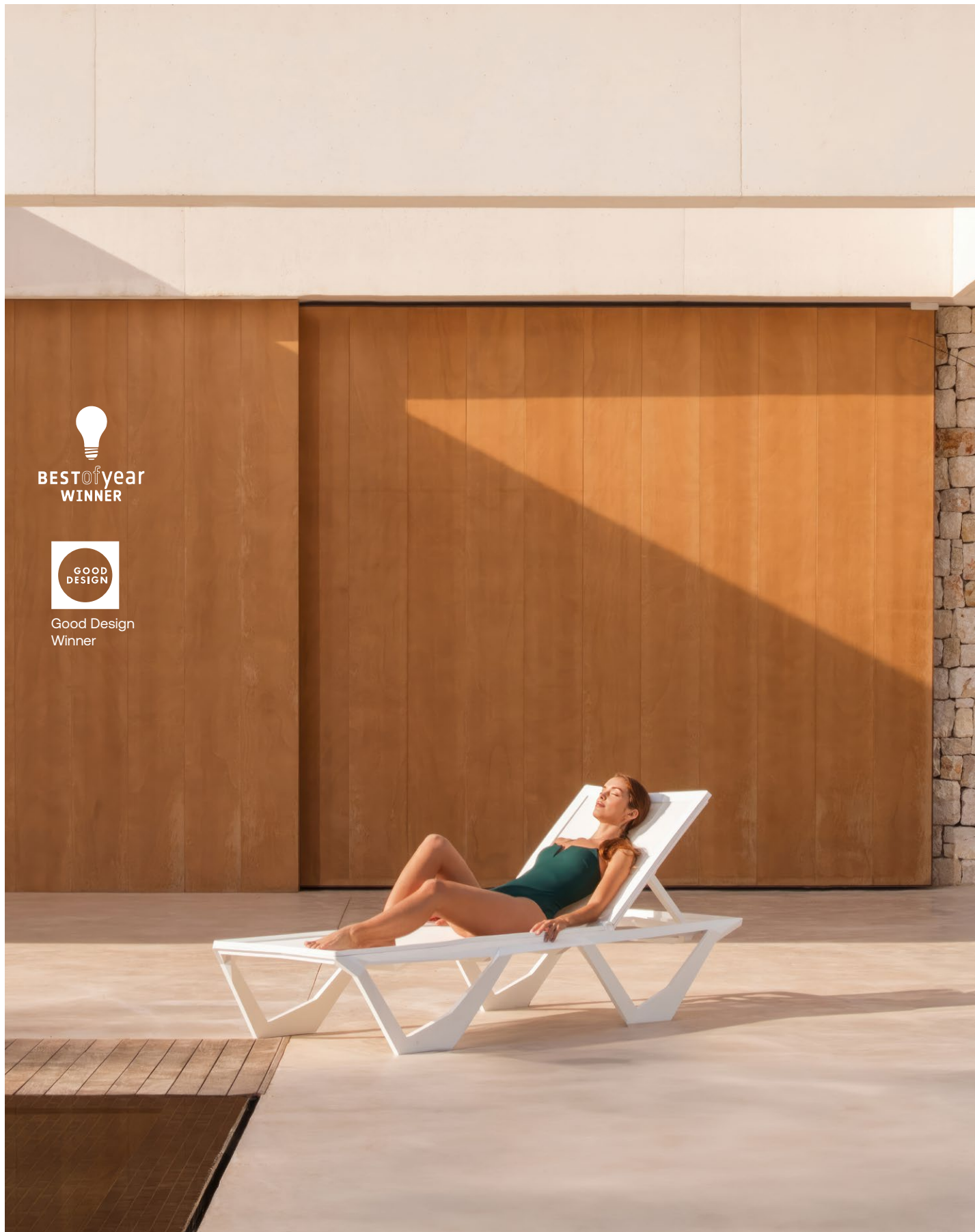
P. 104 — 107

Voxel armchair. White

Chair. Ecru and black



VONDOM 107



P. 106 — 109
Voxel sun lounger.
White

Voxel armchair, sun
lounger, chair, stool
and side table. White



P. 110 — 109
Voxel sun lounger.
White and white
Side table. White



Kimono



112

by Ramón Esteve

P. 110 — 113

Kimono chair. White,
ecru and black



Collection
dimensions



Adan

Adan planter.
Cream



Collection
dimensions

114

by Teresa Sapey

VOINDOM 115

Vela



116

by Ramón Esteve

P. 114 — 117

Vela sectional sofa,
loung chair and puff.
Tortora and louro
brown

Coffee table. Tortora
and solid core tortora

Lamp. Tortora and ice
RGBW

Vela Chill planter.
Tortora

Studio cushions.
Fisterra brown and
portonovo brown



Collection
dimensions





Vela armchair. Tortora
Table. Tortora and solid
core tortora
Planters. Tortora and
tortora



Vela planters. Tortora and tortora

Sofa and lounge chair. Tortora and louro brown

Coffee table. Tortora and solid core tortora

Lamps. Tortora and ice RGBW

Studio cushions. Fistera brown and portonovo brown



Vela sun lounger. Tortora and louro brown

Sun lounge table. Tortora and solid core tortora

Studio cushion. Fistera brown



P. 122

Vela square daybed with 4 reclining backrest and sunroof. Tortora, louro brown, and gray roof fabric.

Vela canopy with blinds. Tortora, tortora, louro brown and gray

Vela metal round canopy with curtains. Tortora, louro brown, tortora and gray curtain fabric 2

Vela round daybed with reclining backrest and sunroof. Tortora, louro brown and gray roof fabric

Studio cushions. Fistera brown and portonovo brown

P. 121

Vela square daybed with 4 reclining backrest. Tortora and louro brown





Vela puffs and round puff. Portonovo white and ice + RGBW
 Vela Chill table. Ice + RGBW and solid core white
 Vela lamps. Tortora and ice + RGBW



Vela catering counter and shelving system. Ice + RGBW



Frame



126

by Ramón Esteve



P. 124 — 127

Frame lounge chair,
sofa, and coffee table.
Lacquered white

Sun lounger.
Lacquered white and
altea white



Collection
dimensions

Frame chair. Ecrú
Dining table. White and
solid core white



Frame sectional sofa.
Camel and arousa
cream
Coffee table. Camel

Ulm



130

by Ramón Esteve

P. 128

Ulm daybed with parasol. Lacquered white, altea white and sunvision white parasol

P. 131

Ulm daybed with fixed backrest. Ecrú and arousa white

Studio cushions. Arousa white

Ulm daybed with reclining backrest and retractable canopy. White, arousa camel and cream roof fabric

Studio cushions. Portonovo ecru and portonovo white



Collection dimensions



VONDOM 131

Ulm lounge chair and sofa. White and altea ecru

Coffee table. White



Ulm lounge chair and sectional sofa. White and altea ecru

Coffee table. White and white glass



P. 132

Moon daybed with woven rope roof. White, getaria gallant and white rope

P. 135

Moon daybed with fabric roof. Ecrú, getaria oasis and roof fabric white

Studio cushions. Getaria cream

Moon daybed. Ecrú and getaria oasis

Studio cushions. Getaria cream



P. 136
Ulm square planater.
Cream

P. 135
Ulm jardiniere. Cream



Rest

138

by A-Cero

P. 136 — 139

Rest sectional sofa
and lounge chair.
Cream and portonovo
cream

Coffee table. Cream



Collection
dimensions

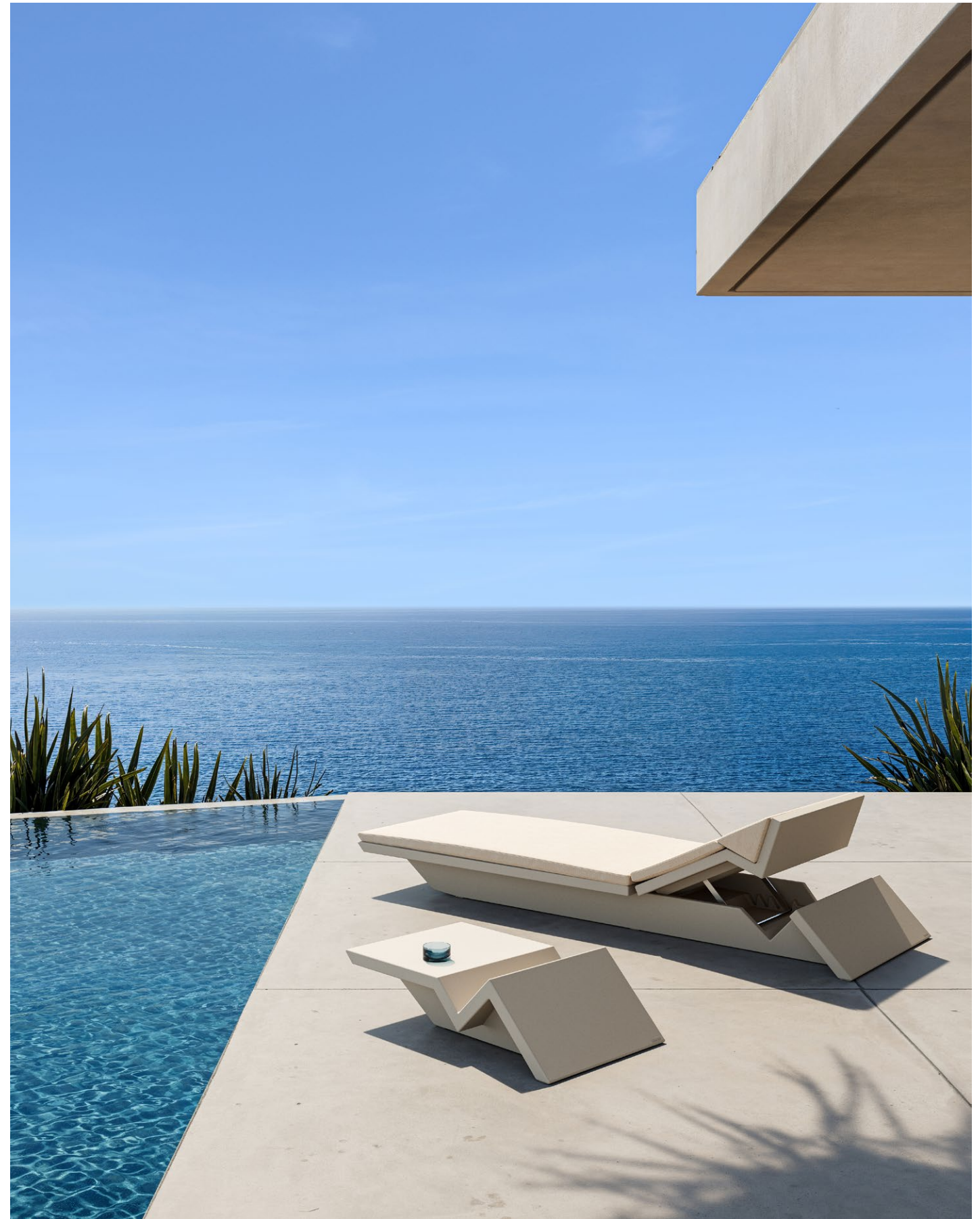




P. 140
Rest chair and dining
table. Cream

P. 139
Rest sun lounger.
Cream and portonovo
cream

Sun lounge table.
Cream



Madison



142

by Eugeni Quitllet



Collection
dimensions



P. 140 — 143

Madison wood chair.
Cream and teak wood
Gatsby dining table.
Tortora and solid core
tortora

Madison wood chair.
black and teak wood

Madison slats chair.
Tortora and tortora
Wood chair. Tortora
and teak wood

Madison slats chair.
Black and tortora



P. 144 — 143

Madison upholstered chair. Tortora and calella tortora

Madison dots chair. Cream and jade

Madison dots chair. Tortora and ecru.

Gatsby dining table. Tortora and solid core tortora

Madison upholstered chair. Cream and calella green

Gatsby dining table. Cream and wood finish oak 1



Africa

146

by Eugeni Quitllet

P. 144

Africa lounge chair and sofa XL. Lacquered camel and fisterra camel

Tulum coffee table. Camel and teak wood

P. 147

Africa padded armchair. Lacquered camel and fisterra camel

Tulum dining table. Camel and teak wood



Collection
dimensions



P. 148
Africa lounge chair,
sofa and sofa XL.
Lacquered camel and
fisterra camel
Tulum coffe table.
Camel and teak wood

Africa chair and
armchair. Tortora
Mari-Sol tables.
Tortora and solid core
tortora

P. 147
Africa armchair. Cream
Stool. Clay
Chair. Tortora
Mari-Sol table. Cream
and solid core cream
High table. Clay and
solid core clay





Africa chair and
armchair. Cream
Mari-sol table. Cream
and cream

Africa sun lounge.
Tortora and tortora
Stool. Clay
Mari-sol high table.
Clay and solid core
clay

Africa lounge chair
and sofa. Tortora and
fisterra tortora
Tulum table. Tortora
and teak wood

Africa lounge chair and
sofa. Ecrú and fisterra
ecru
Tulum table. Ecrú and
teak wood

Africa armchair. Cream
Chair. Tortora
Mari-sol table. Tortora
and ecru.



P. 150 — 153
Africa sun lounge.
Tortora and tortora



Pezzettina

P. 152 — 155

Pezzettina sofa, and
louge chair. Ecu and
calella cream

Planters. Cream

Studio cushions.
Calella cream and
calella gray

Blow coffee table

Pezzettina armchair.
Cream and cream

Table. Cream and solid
core cream



Collection
dimensions

Stone



156

by Stefano Giovannoni + Elisa Gargan



Collection
dimensions

P. 154 — 157

Stone low table and
low stool. White

Planters. Ecrú





P. 160
Stone planters. Ecrú

P. 159
Stone sofa, lounge
chair, coffee table and
planter. Ecrú



Ibiza



Green Good
Design 2020
Winner



reddot winner 2020



Collection
dimensions



162

by Eugeni Quitllet



P. 160

Ibiza low table,
lounge chair, chair
and chair with arms.
White

P. 163

Ibiza chair with arms,
chair and armchair.
Ecrú
Lounge chair. White



VONDOM 163

P. 164
Ibiza sun lounge,
stool and chair.
White

Mari-sol tables.
White and solid core
white

P. 163
Ibiza low table and
chair. White

Lounge chair and
armchair. Jade





P. 164 — 167
Ibiza sun lounger and
sun lounger table.
White



Spritz

168

by Archirivolto Design

P. 166

Spritz chair. Tortora

Armchair. White

P. 169

Spritz armchair, stool,
high table, chair and
chair with arms. White



Collection
dimensions





Spritz sofa, stool,
high table, coffee
table, sun lounger
and lounge chair.
Black



Spritz stool and bar
table. Black

Spritz sun lounger
and sun lounger
table. Ecru



Spritz sun lounge
and sun lounge
table. Tortora



Spritz sun lounge.
Tortora and portonvo
tortora
Sun lounge table.
Tortora

Love



reddot winner 2020



174

by Eugeni Quitllet



Collection
dimensions

P. 172

Love chair. Clay

P. 175

Love chair. Jade



VOINDOM 175

P. 176 — 175
Love sun lounger.
White and white



Love Mini



178

by Eugeni Quitllet

Collection
dimensions

P. 176
Love Mini chair. Black

P. 179
Love Mini chair. White,
black and ecru
Peacock planter. White



Brooklyn

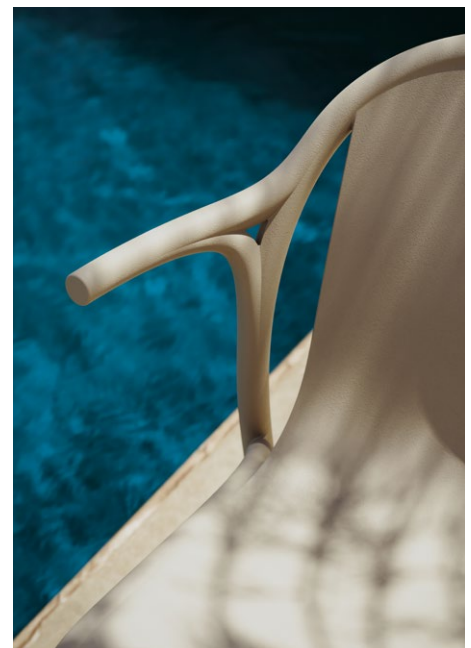
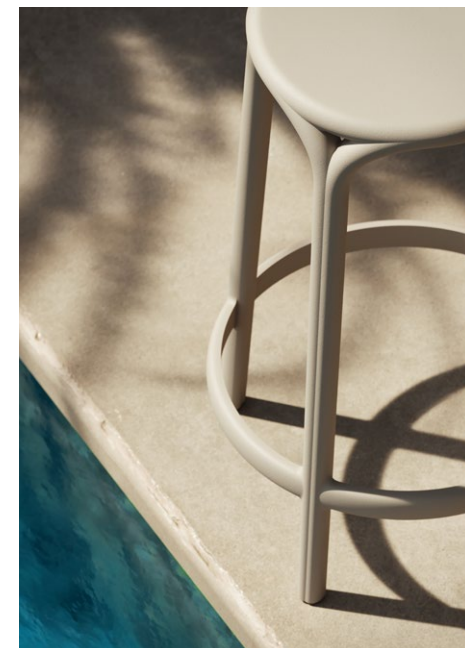
180

by Eugeni Quitllet



P. 178 — 181
Brooklyn stool, chair
and chair with arms.
Ecrú

Mari-sol high table.
Ecrú and solid core
ecru



Collection
dimensions

Mari-Sol

182

by Eugeni Quitllet

P. 180 — 183

Mari-Sol dining table.
Tortora and tortora.

Dining table. Cream
and cream

High table. Clay and
clay

Africa chair. Tortora

Armchair. Cream

Stool. Clay



Collection
dimensions

Wall Street



184

by Eugeni Quitllet

P. 182

Wall Street armchair.
White

Mari-sol table. White
and solid core white

P. 185

Wall Street stool.
White

Frame table. White
and solid core white



Collection
dimensions

Hidra



186

by Eugeni Quitllet

P. 184 — 187
Hidra armchair. Black



Collection
dimensions

And

188

by Fabio Novembre

P. 186 — 189
And arch and bench.
White

Collection
Dimensions



Delta

190

by Jorge Pensi Studio

Collection
dimensions

P. 188

Delta chair. White

Table. White and solid
core white

P. 191

Delta sectional sofa.
Tortora and arousa
tortora



Solid



192

by Stefano Giovannoni

P. 190

Solid sofa, coffee table
and lounge chair. Ecrú

P. 193

Solid armchair, chair
and table. White



Collection
dimensions

Blow

194

by Stefano Giovannoni

P. 192

Blow sofa, lounge
chair and coffee table.
Cream

P. 195

Blow planters. Cream

Collection
dimensions



Pillow

Collection
dimensions

P. 194

Pillow lounge chair,
puff, coffee table and
planter. White

P. 197

Pillow sun lounger and
coffee table. White



196

by Stefano Giovannoni

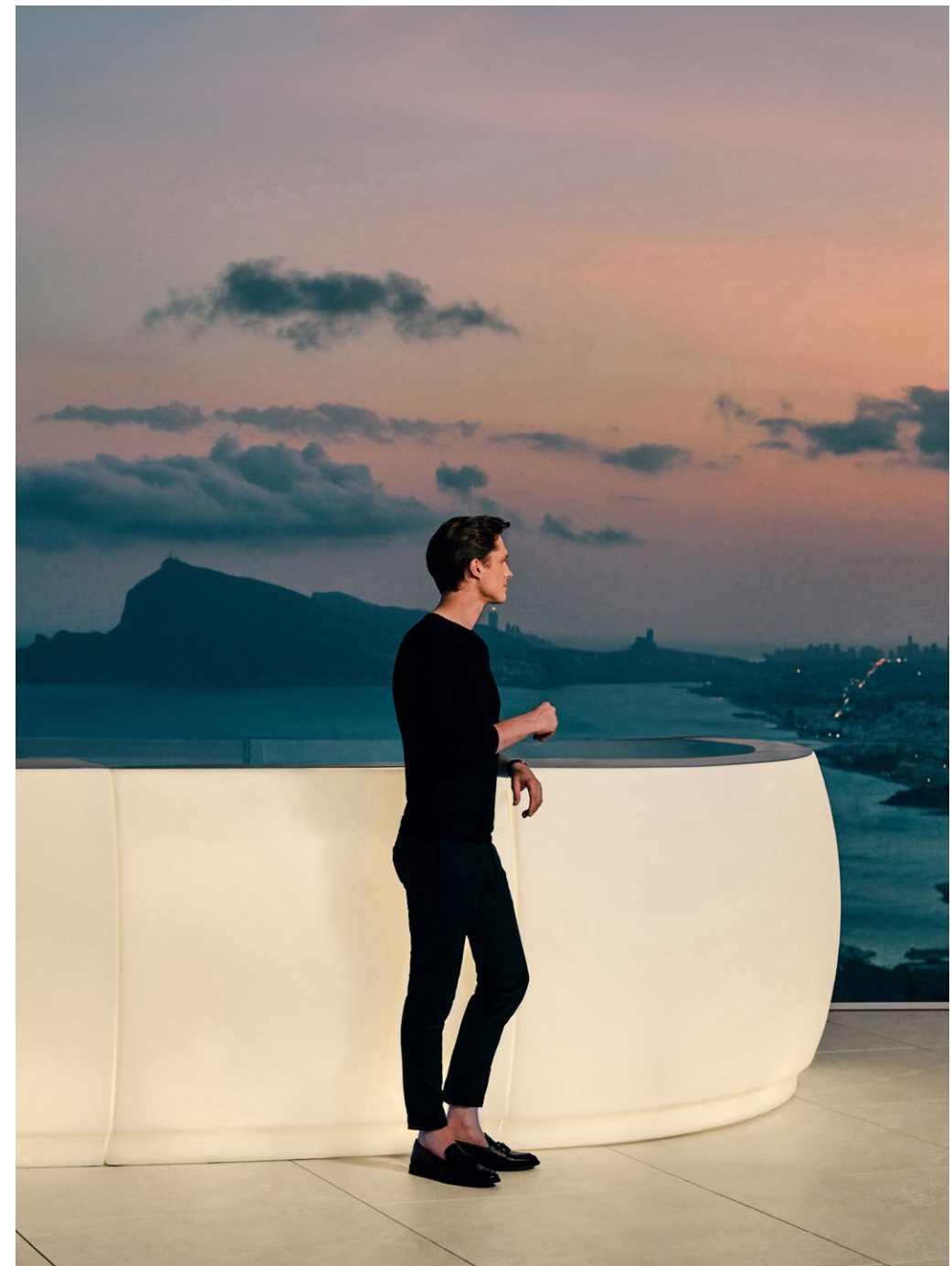


VOINDOM 197

Fiesta

198

by Archirivolto Design



P. 196 — 199
Fiesta counter.
Ice + RGBW

Collection
dimensions



Lava

Collection
dimensions

Lava bench.
Lacquered white

200

by Karim Rashid



Surf

Surf sun lounger.
Black, tortora and white



Collection
dimensions

by Karim Rashid

201

Quartz

202

by Ramón Esteve



P. 200 — 203

Quartz chair, chair with
arms and folding chair.
Ecrú

Tables. Ecrú and solid
core ecrú

Collection
dimensions

VOINDOM 203

Manta



204

by Eugeni Quitllet

P. 202

Manta wooden swivel armchair. Wood 2 and black

Frame table. Black and black

P. 205

Manta swivel armchair. White and white

Swivel caster armchair. Black and ecru

Wooden swivel armchair. Wood 2 and black

Cantilever armchair. Black and ecru



Collection
dimensions

Incasso



206

by Archirivolto Design

P. 204

Incasso swivel
armchair. Ecrú and
black

Frame table. Black and
stone finish tortora

P. 207

Incasso swivel
armchair with wooden
legs. Wood 1, black
and ecru

Armchair. Black and
black

Armchair with caster.
Black and white



Collection
dimensions

Vases



208

by Estudi{H}ac - JM Ferrero

P. 206 — 209

Vases armchair and
stool. White and white

Planters. Green

Mari-sol table and high
table. White and solid
core white



Collection
dimensions



P. 210
Vases lamps. Ice +
RGBW

Vases island. Ice +
RGBW and altea white

P. 209
Vases lamps. Ice +
RGBW



Marquis

212

by Estudi{H}ac - JM Ferrero



P. 210
Marquis planters.
Ecru and tortora

P. 213
Marquis lamps. Ice +
RGBW



Collection
dimensions

P. 214—213
Marquis table lamp.
Clear

Faz chair. Black
Table. Black and solid
core black



Skull

216

by Teresa Sapey

P. 214 — 217
Skull stool, table and
planters. Tortora



Collection
dimensions

Forest

218

by Ramón Esteve

P. 216

Forest 2m. Ice + RGBW

P. 219

Forest 2m, 1,5m and
1m. Ice + RGBW

Collection
dimensions



VONDOM 219



Chrismy

220

by Teresa Sapey

P. 218 — 221
Chrismy trees and
nano. Ice + RGBW

Collection
dimensions



VONDOM 221

Bum-Bum

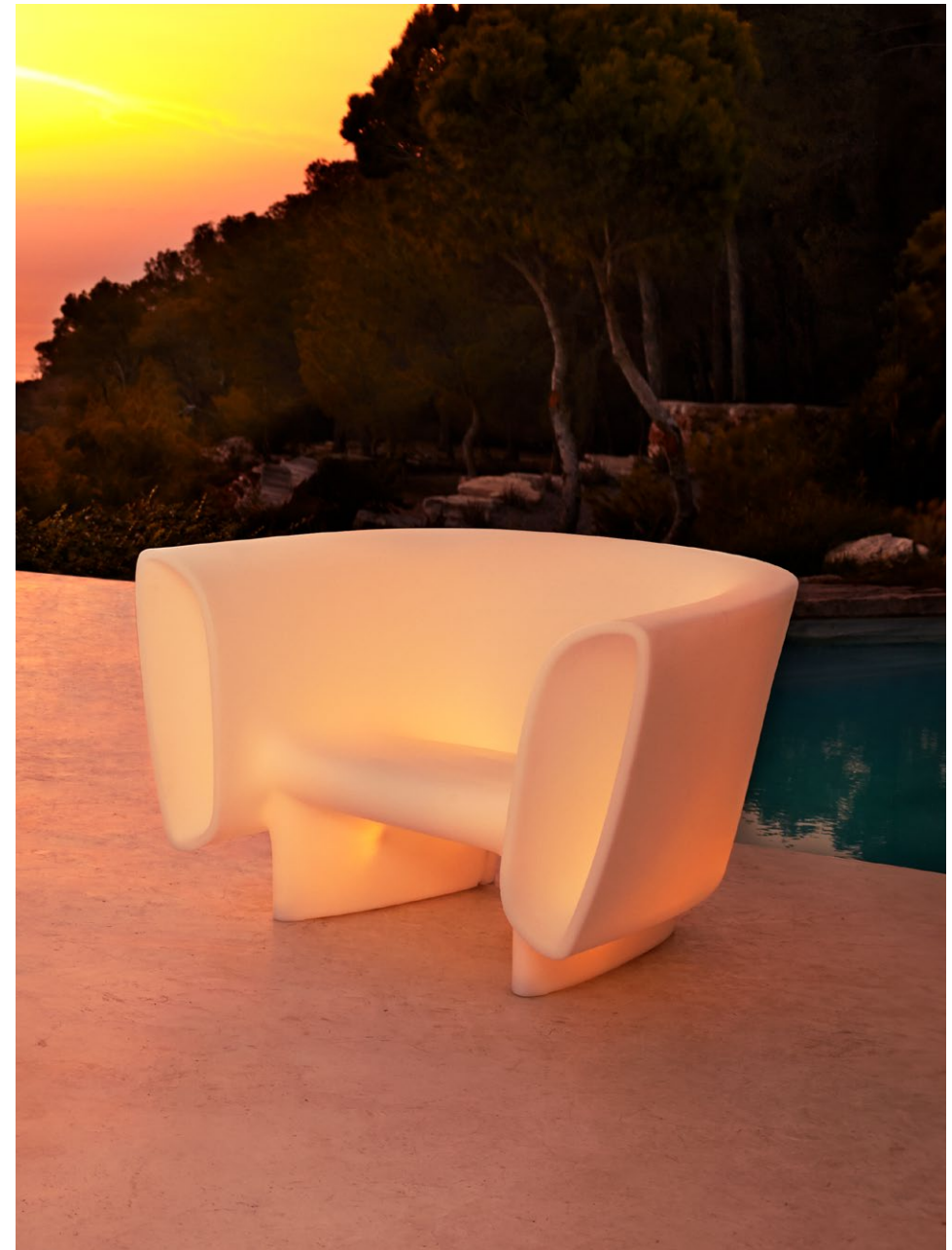


222

by Eugeni Quitllet

P. 220 — 223

Bum-Bum sofa, coffee
table and lounge chair.
Ice + RGBW



Collection
dimensions

Bloom

224

by Eugeni Quitllet

P. 222
Bloom planter.
Lacquered white

P. 225
Bloom lamp. Ice +
RGBW

Collection
dimensions



Biophilia

226

by Ross Lovegrove

P. 224

Biophilia chair. White

Table. Ice + RGBW

P. 227

Biophilia sofa and
lounge chair. White

Collection
dimensions



UFO

228

by Ora-ïto

P. 226

UFO stool. White

Chair. Black

Mari-sol high table.
White and transparent
glass

Mari-sol table. Black,
and transparent glass

Bones planter. White

P. 229

UFO lounge chair.
Black and white

Coffee table. Black and
black glass



Collection
dimensions

Pal

Collection
dimensions

P. 228
Pal jardiniere and high
planter. Camel

P. 231
Pal jardiniere, rised
planter and planter.
Camel

230

by Karim Rashid



Kes

232

by Gabriele + Oscar Buratti

P. 230 — 233

Kes chair and chair
with arms. White

Mari-sol table. White
and solid core white

Collection
dimensions



Wing



234

by A-Cero

P. 232

Wing stool and high
table. White

Lamp. Ice + RGBW

P. 235

Wing low stool and
coffee table. White

Chair. Lacquered black
and lacquered white



Collection
dimensions

Alma

Alma planter.
Black

Collection
dimensions



236

by A-Cero

Bones

Bones planter.
Ice + RGBW

Collection
dimensions



by Ludovica + Roberto Palomba

237

Peacock & Rosinante

Peacock planter. Ecrú
Rosinante. Camel and
tortora

Rosinante
dimensions

Peacock
dimensions

Roulette

Roulette
dimensions



Roulette. Clay, white
and ecru

238

by Eero Aarnio

by Eero Aarnio

239

Noma

240

by Javier Mariscal

P. 238

Noma table, chair and
planter. White

P. 241

Noma high table and
high stool. White

Collection
dimensions



P. 242
Noma low table and
low stool. White

P. 241
Noma Twins planter.
White



Sabinas



244

by Javier Mariscal

P. 242 — 245
Sabinas sofa and
loung chair. Ice +
RGBW and altea white
Coffee table. Ice +
RGBW

Collection
dimensions



VOIDOM 245



P. 246 — 245
 Sabinas armchair. Clay
 Mari-Sol dining table.
 Black and solid core
 black



Mora

Mora lamp. Ice + RGBW
and black

[Collection](#)
[dimensions](#)



248

by Javier Mariscal

Blanca

Blanca lamp. Ice + RGBW
and black

[Collection](#)
[dimensions](#)



249

by Javier Mariscal

Bye-bye

Bye-Bye planter.
Lacquered white

Collection
dimensions



250

by Harry Paul

Agatha

Agatha coffee
table and chair. White

Collection
dimensions



251

by Agatha Ruiz de la Prada

Origami



252

by Studio Vondom

P. 250
Origami Saru.
Anthracite
Hyou. Tortora

P. 253
Origami Kotori. Ecrú
Tori. Tortora

Origami Inu. Tortora
Neko. Anthracite
Kitsune. Ecrú
Usagi. Brown



Collection
dimensions



Origami Kashi, Yuri and
Hasu planters. Camel

Hanami planter. Green



Origami Hinoki planter.
Cream

Jut

256

by Studio Vondom

P. 254
Jut table, chair and
armchair. Ecrú

P. 257
Jut table and chair.
Ecrú

Jut sun lounger. Ecrú
and arousa white

Sun lounger table. Ecrú



Collection
dimensions

P. 258
Jut sofa, lounge chair
and coffee table. Ecrú

P. 257
Jut high table and
stool. Ecrú



Jut Chill

260

by Studio Vondom

P. 258 — 261

Jut Chill ottoman,
coffee table and lamp.
Ice + RGBW

Daybed. Ice + RGBW
and altea white

Collection
dimensions



The Second Light

The Second Light
lamps. Ice + RGBW

Collection
dimensions

262

by Studio Vondom

Bubbles

Bubbles lamps.
Ice + RGBW

Collection
dimensions

by Studio Vondom

263

Planters

Collection
dimensions

P. 262
Curvada. Green
Centro Alto. Black

P. 265
Organic planters.
Black and green



264

by Studio Vondom



VONDOM 265

P. 266
Cilindro. Ecrú

P. 265
Torre Cilíndrica.
Cream



P. 268
Angular and Medio
Cilindro. Ecrú

P. 267
Torre Cuadrada and
Jardinera. Crema





P. 270
Cubo and Cubo Alto.
Ecrú

Cono Alto. Tortora
Cono. Green

P. 269
Cono Cuadrado. Green
Cono Cuadrado Alto
and Jardinera Cónica.
Tortora





Land. Tortora
Wall. Ecu

Centro. Negro





P. 272
Cuenca. Brown

P. 275
Sfera. Camel



P. 276
Uve. Green

P. 275
Muro. Tortora







Designers

We travel the world until we find the best ambassadors of the Vondom spirit: Fabio Novembre, Stefano Giovannoni, Eugeni Quitllet, Ora-Itto, Ross Lovegrove, Karim Rashid, Javier Mariscal... Renowned designers and architects from all over, it doesn't matter where. What counts is their passion for shapes, culture and the vanguard. They transform each piece of furniture into an exclusively "Vondom" mode of expression. Nothing is random, everything happens for a reason. Just as Ramón Esteve become our artistic director for a very good reason.

Ramón Esteve

Creative Director

Luna, Posidonia, Hamptons, The Factory, Tablet, Pixel, Gatsby, Kimono, Faz, Frame, Quartz, Ulm, Vineyard, Vela

Ramón Esteve Cambra is Architect and Designer; arising one facet as a consequence of the other. In 1991, he founded Ramón Esteve Estudio with the premise that architecture is a global discipline.

His training as an architect became a transversal vision where Architecture and Design form one single concept, almost inseparable, both generated under the same laws and the same design premises. Its aim is the development of complete environments through a mutual interaction between both disciplines, so design acts on architecture and vice versa and the importance and difficulty of both disciplines are equally acknowledged.



Marcel Wanders

Suave, Venus

Born in Boxtel, Wanders graduated cum laude from the Hogeschool voor de Kunsten Institute of the Arts Arnhem in 1988 after being expelled from the Design Academy Eindhoven.

In 2000 he opened his studio in Amsterdam, gaining attention in 1996 with his Knotted Chair, which paired high tech materials with ‘low tech’ production methods and in 2001 Wanders co-founded the design label Moooi., of which he is co-owner and art director.

Marcel Wanders’ chief concern is bringing the human touch back to design, ushering in what he calls design’s ‘new age,’ in which designer, craftsperson and user are reunited. In his process, Marcel Wanders defies design dogma, preferring instead to focus on holistic solutions rather than the technocratic. In this universe, the coldness of industrialism is replaced instead by the poetry, fantasy and romance of different ages, vividly brought to life in the contemporary moment.



Jean-Marie Massaud

Pasadena, Milos

Since the beginning of his career (a 1990 graduate of Paris’ ENSCI-Les Ateliers, Paris Design Institute), Jean-Marie Massaud has been working on an extensive range of works, stretching from architecture to objects, from one-off project to serial ones, from macro environment down to micro contexts. Major brands such as Axor, Cassina, Christofle, Poliform, Toyota have solicited his ability to mix comfort and elegance, zeitgeist and heritage, generosity and distinction.

Beyond these elegant designs, his quest for lightness – in matters of essence – synthesize three broader stakes: individual and collective fulfillment, economic and industrial efficiency, and environmental concerns. “I’m trying to find an honest, generous path with the idea that, somewhere between the hard economic data, there are users. People.”



Eugeni Quitllet

Madison, Ibiza, Love, Bum-Bum, Africa, Brooklyn, Wall Street, Mari-sol, Hydra, Bloom, Manta

The Catalan designer Eugeni Quitllet was born on 17th April 1972 in Ibiza. He graduated from ‘La Llotja’ art school in Barcelona. Through his creative vocabulary he exceeds simple relationships between function and style unveiling innovative objects.

Between drawing, sculpture and contemporary archaeology, Quitllet literally reveals silhouettes hidden in the material, extremely visual skeletal objects elegantly master fullness and emptiness often with a touch of humour: the Masters chair combines the 3 contours of legendary seats by Eames, Saarinen and Jacobsen, the K Ray lamp is an organic UFO, a network of veins hollowed out of the material which results in an object suspended in a frame, his signature method prevalent naturally in several of the designer’s projects: the Shine vases, the Light Air lamp, the O’Clock lamp, without forgetting the O Ring watch, a hole in time in the true sense, best seller of the brand Fossil modernising watch-making codes.

Eugeni Quitllet is a design world freak capable of devouring the whole of our environment in his own way to serve it up to us transformed.



Fabio Novembre

And

He was born in Lecce in 1966. He moved to Milan in 1984, where in 1992 he received a degree in architecture. In 1993 he lived in New York City where he attended a movie-direction course at the New York University. In 1994, he was commissioned to design his first project: the “Anna Molinari Blumarine” shop in London. In the same year he opened his own studio in Milan. From 2000 until 2003 he worked as Art Director at Bisazza, contributing in the international growth of the mosaic tile brand.

"plastic means “capable of being shaped” and that’s exactly what is my feeling when I approach a design in plastic. There’s an expressive freedom that rarely happens with other materials..."



Ora-ïto

UFO

Born in 1977, this iconoclastic artist became globally famous at the end of the 90’s by hijacking in 3D the products of the most emblematic and international brands such as Vuitton, Apple, Nike, Bic... Furthermore thanks to numerous publications in the press, the fiction turned into reality. When customers tried to purchase these imaginary products, the orders flooded Ora-ïto’s web site. This became the second digital work ever acquired by the National Funds of Contemporary Art (FNAC). During the years 2000, Ora-ïto dedicated himself to his own studio and the creation of real products, by developing transversal projects of nearly all the business sectors of design, architecture, communication, and so on.

His creations conceal the codes of a new luxury, timeless and universal with the same minimal working drawing: evident forms to be understood in flash, fruit of his philosophy.

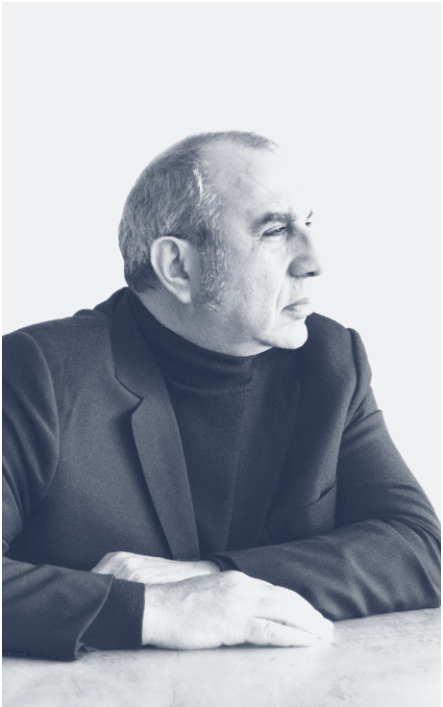


Stefano Giovannoni + Elisa Gargan

Blow, Solid, Stone, Pillow

Stefano Giovannoni was born in La Spezia in 1954 and graduated from the Faculty of Architecture in Florence in 1978. He lives and works in Milan.

He taught and conducted research at the Faculty of Architecture in Florence from 1979 to 1991. He has been a professor at Domus Academy in Milan, at the Università del Progetto in Reggio Emilia and professor of Industrial Design at the Università di Architettura in Genoa.



Archirivolto Design

Fiesta, Pezzettina, Spritz

Claudio Dondoli – Marco Pocci, Italy. Archirivolto was founded in 1983 by Claudio Dondoli and Marco Pocci as an industrial planning, design and architecture studio. While studying Architecture in Florence, Claudio and Marco and some friends put up an experimental theatre group. When they decided to focus their joint efforts on design, consolidating their ties of friendship, their interest in theatre strongly influenced the setup of their new studio, drenched in creativity, sense of reality, respect and attention for the public.



Ross Lovegrove

Biophilia

Ross Lovegrove is a designer and visionary whose work is considered to be at the very apex of stimulating a profound change in the physicality of our three-dimensional world. Inspired by the logic and beauty of nature his design possesses a trinity between technology, materials science and intelligent organic form, creating what many industrial leaders see as the new aesthetic expression for the 21st Century. There is always embedded a deeply human and resourceful approach in his designs, which project an optimism, and innovative vitality in everything he touches from cameras to cars to trains, aviation and architecture.



Jorge Pensi Studio

Delta

Born in Buenos Aires in 1946, he studied architecture in his home city. He left Argentina in 1975, dreaming of new horizons and challenges. After crossing the ocean, he settled in Barcelona and became a Spanish citizen . In 1977, he went into partnership with Alberto Lievore. They worked together until 1984. He then set up his own studio in Barcelona’s Gothic quarter. Pensi believes that part of his professional success is due to the intimate, close and warm relationship he has with his team and his clients, allowing shared project development with optimum results. Jorge Pensi has given conferences, seminars and workshops all over the world. Jorge Pensi has been awarded numerous prizes and has received widespread recognition throughout his career, including the Spanish National Design Prize in 1997, awarded by the Ministry of Industry and Energy for outstanding professional achievement.

He has recently become known for his other passion, music, which he had kept to himself until recently. He has released two albums as a composer and singer.



Karim Rashid

Voxel, PAL, Vertex, Lava, Surf

Visionary and prolific, Karim Rashid is one of the most unique voices in design today. With more than 4000 designs in production, over 300 awards to his name, and client work in over 40 countries, Karim’s ability to transcend typology continues to make him a force among designers of his generation.

A cultural shaper, Karim is a frequent guest lecturer at universities and conferences globally, aspiring to change the world by making design a public subject. He is also regularly featured in print and digital platforms by media companies like CNN, Vogue, Elle, GQ, The New York Times, and countless more. This reach allows Karim to fulfill his ambition of disseminating the importance of design in everyday life.

Karim established his private design studio in New York City in 1992. He expanded his global reach with a studio in Shenzhen, China in 2014. In his spare time Karim’s pluralistic practice flirts with art, fashion, and music and is determined to creatively touch every aspect of our physical and virtual landscape.



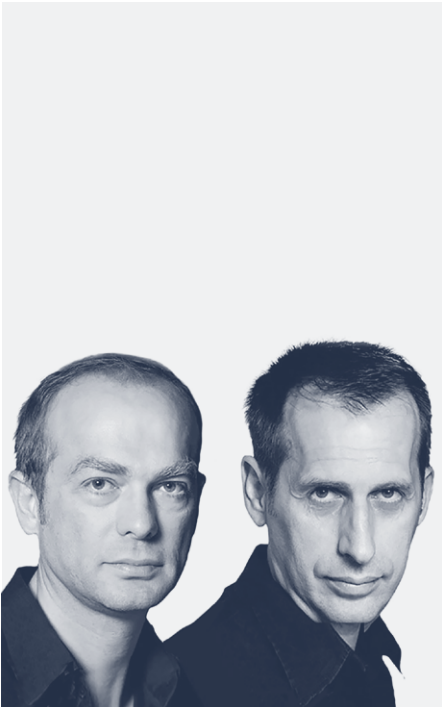
Oscar + Gabriele Buratti

Kes

Gabriele Buratti (1962), architect and professor of interior design at the Facoltà del Design of the Politecnico di Milano, and Oscar Buratti (1967), architect, have founded the architecture and design studio BURATTI ARCHITETTI.

The studio is transversally involved in projects of different scales, from the architecture of buildings and urban areas to interiors, from furniture and product design to exhibition and showroom design, in an intense and varied professional path, in which themes, locations, brands, people, materials and workmanship mingle together contaminating one another.

They design residential, commercial and industrial buildings, they carry out projects in historical city centres and refurbishing measures of building complexes, they design villas and interiors of working, residential, retail spaces, in Italy and abroad, with the aim of combining culture with professional specialization, experimentation with technique and an original vision with a high standard quality.

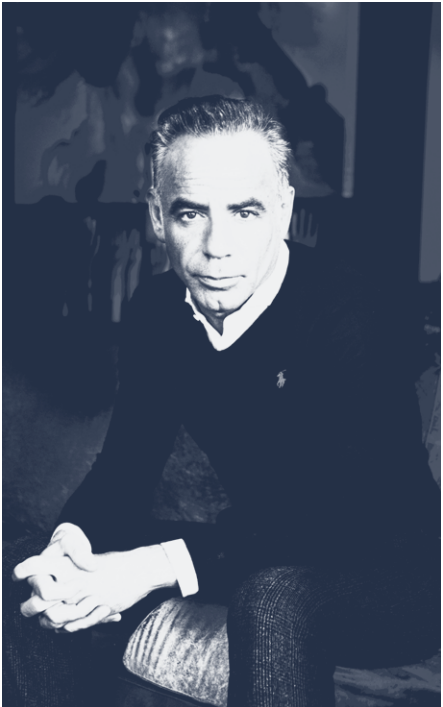


A-cero

Wing, Rest, Alma

Joaquín Torres (*1969) – Rafael Llamazares (*1970), Spain. A-cero Joaquín Torres architects company established in 1996 whose activity focuses on complete development of architectural projects.

The human team, led by Joaquín Torres and his partner Rafael Llamazares, has been growing throughout the past year and sums up to more than 60 professionals spread out through different offices Spain , UAE Dubai, Dominican Republic, currently working on projects of different magnitude. “Our working method is based on a detailed analysis of the clients needs and the projects programme: we imagine, project and persuade. “The key to our success is that we stick to the initial idea through out the whole process.



Ludovica + Roberto Palomba

Bones

Ludovica+Roberto Palomba’s work has always been rich of cultural references. Their projects are derived from observations of change in human behavior. Their mission is to generate products that merge function, innovation and longevity – intimate and emotional connections that last.

“We believe that good design already exist in a sort of collective unconsciousness and our task is to mold and deliver them”. A truly successful piece of design must feel fresh but not unfamiliar when it is discovered.



Estudi{H}ac – JM Ferrero

Vases, Marquis

In 2003, José Manuel Ferrero founded estudi{H}ac to give life to all the ideas that appeared unceasingly in his head and in just 16 years he has turned his design workshop into a national and international reference. The passion he puts into his work is evident from the very beginning. Discreet, cultured, elegant and immensely creative, for Ferrero design is a way of life that keeps the mind fully active in terms of creativity.

We could say that the British term “bespoke” is the dogma that governs each of the Valencian businessman's designs, as he creates pieces and elements tailored to each project.



Javier Mariscal

Sabinas, Noma, Blanca, Mora

Javier Mariscal is, First and foremost, an image creator who develops his work using all kinds of supports and disciplines. Furniture design, painting, sculpture, illustrations, interior design, graphic design, landscaping, gardening and so on are all the object of his professional, vital activity.

He has collaborated with companies such as Memphis, Akaba, Bidasoa, BD Ediciones de Diseño, Moroso, Nani Marquina, Vorwerk, Equipaje, Alessi, Sangetsu, Magis, Cosmic, Amat3, Santa&Cole, Lali que and Phaidon. Mariscal expresses himself using a personal language that is complex in its intention and simple in its statements, innocent yet provocative, that he uses to innovate, risk and communicate. He enjoys provoking the eyes that look at his works and creating complicity with them.



Harry Paul

Bye-bye

Known for projecting mysterious objects, exemplars of vibrant design of the 21st century, his resulting design approach concentrates on experimentation with materials, technologies and lines.

Harry Paul works across a wide range of disciplines, from furniture (in- and outdoor), lightning and table top, to textiles, watches and golf shoes, to architectural & interior/ stand commissions and unique sculpture pieces for clients world wide.

Born in Breda, the Netherlands, class 1966, industrial designer with a degree from the Design Academy Eindhoven (former AIVE), where he, before graduating, 1992, under Lidewij Edelkoort and Axel Enthoven, won the 1st prize in the European design competition for leisure of GE Plastics with a proposal for a custom made protective sports equipment.



Agatha Ruiz de la Prada

Agatha

Agatha Ruiz de la Prada first stepped into the fashion world in 1981. The collection proved to be such a success that she soon opened her first studio-shop in the Spanish capital and started to participate in fashion shows in Madrid and Barcelona. Although Agatha gained a certain level of recognition early on in her career, her true fashion breakthrough came when she allied forces with one of Spain's most important department stores, El Corte Inglés. Thanks to this partnership, the designer's collections were soon distributed throughout the entire national territory. Having conquered Spain, Agatha little by little started to cross borders and gain international recognition by means of her fashion shows and exhibitions and then expanded the family of products: clothes, furniture, perfumes...



Eero Aarnio

Peacock, Roulette, Rosinante

Aarnio studied at the Institute of Industrial Arts in Helsinki, and started his own office in 1962. The following year, he introduced his Ball Chair, a hollow sphere on a stand, open on one side to allow a person to sit within. The similar Bubble Chair was clear and suspended from above. Other innovative designs included his floating Pastil Chair (similar to a solid inner tube),[2] and Tomato Chair (more stable with a seat between three spheres). His Screw Table, as the name suggests, had the appearance of a flat head screw driven into the ground. He was awarded the American Industrial Design award in 1968.

Aarnio's designs were an important aspect of 1960s popular culture, and could often be seen as part of sets in period science-fiction films.[3] Because his designs used very simple geometric forms, they were ideal for such productions. Eero Aarnio continues to create new designs, including toys and furniture for children. Eero Aarnio opened his official webshop and first Design Eero Aarnio Showroom, in Helsinki. There you can find Aarnio's latest design, prototypes and latest news.



Teresa Sapey

Adan, Chrismy, Chemistubes

Studio Teresa Sapey is an architecture and design studio based in Madrid since it was founded in 1990. The team's guiding force streams from curiosity and energy. In fact, the range of fields approached by this practice is extremely broad: It varies from spaces to displays via furniture, graphics and editorial works. Projects not only stem from feelings, but they are also capable of transmitting these same emotions to their clients and customers. "By working with spaces my aim is to be touching and therefore render emotions palpable: Three-dimensional, even four-dimensional. No matter the feelings is, as far as it is a feeling, I would go for it! I believe that architecture should interpret, build and transmit these inspiringly and usefully."



The sections "Product Dimensions," "Finishes," and "Technical Info" are no longer at the end of our catalog. You can now access them through these links.

Los apartados "Product Dimensions", "Finishes" y "Technical Info" ya no están al final de nuestro catálogo. Ahora puedes acceder a ellos mediante estos enlaces.

[Product Dimensions](#)

[Finishes](#)

[Technical Info](#)

Design
VCD_0525

Studio Vondom
Mayo_2025

EN | The possible differences between pictures and real items could be due to the colors in the printing technology process.

VONDOM all rights related to trademarks, pictures and designs are reserved.

All manufacturing distribution and/or trading activities in any media of the products displayed in the collections are prohibited. Specifically those rights about total or partial reproduction, transformation and/or usage in public with commercial purposes.

VONDOM reserves the right to effect any changes or improvements, without notice.

All the information included in this catalogue regarding sizes and capacities are approximated.

© Copyright. 2025. Vondom, S.L.U.

All rights reserved to the order of VONDOM

ES | Las posibles diferencias entre el color original y el color reproducido se deben a la técnica de impresión.

VONDOM se reserva el derecho exclusivo sobre todas las marcas, fotografías y diseños utilizados en sus colecciones, por lo que queda prohibida la fabricación, distribución y/o comercialización de los productos que los contienen, en cualquier medio o soporte.

En particular quedan reservados a favor de su titular los derechos de reproducción total o parcial, la transformación de los mismos y/o su utilización fuera de la esfera privada y con fines comerciales.

VONDOM se reserva el derecho de modificar total o parcialmente sin aviso previo cualquiera de los datos y especificaciones de esta publicación.

Toda la información que aparece en este catálogo referente a dimensiones y capacidades son aproximadas.

© Copyright. 2025. Vondom, S.L.U.

Todos los Derechos a beneficio de VONDOM





Head Quarters

VONDOM S.L.U.
Poligono 6, 16
46293 - Beneixida, Valencia - Spain
t.: +34 96 239 84 86 • info@vondom.com

México

VINTIU ENTERPRISES SA DE CV
t.: +52 55 11 13 99 73 • +52 55 11 99 74
latam@vondom.com

USA

VONDOM LLC.
8803 NW 23rd Street,
Miami, FL 33172 - USA
ph.: +1 786 391 0274 • +1 786 353 9108
infousa@vondom.com

China

VONDOM Lifestyle Design Co., Ltd.
C6-103, No. 700, Wan Rong Road, Jing An
200072 – Shanghai - China
+86 21 6521 9916
infochina@vondom.com

Design culture is the key to our success. This is what motivates us to create new collections that give spaces a new dimension. Enabling our surrounding environment, shapes and forms to communicate in a way. Vondom pieces transform the simplest space into an ambiance filled with glamour, both unique and extraordinary. This is what it's all about, creating atmospheres where we can take a hold of life and feel that we are here to live it, enjoy it and surround ourselves with beauty.

VONDOM